

Real ute tray protection Doesn't "drop in" ... It sprays on.

Rhino Linings' sprayed-on ute linings outperform all plastic drop-in liners, rubber mats and paint like coatings. Rhino gives your ute real tray protection. Slippery drop-in liners crack, peel and warp and remove surface paint from your truck as they shift and rattle in the tray. They also trap moisture between the liner and the tray increasing the risk of rust and corrosion. Nothing protects your ute like a real Rhino.

Won't Crack,



Warped drop-in liner



Cracked drop-in liner

Peel, or Warp

	SPRAYED-ON RHINO LININGS	PLASTIC DROP-IN LINERS
Watertight seal to Ute tray prevents rust and corrosion	YES	NO
Resists scratches and abrasions	YES	NO
Contour fit insulates Ute tray from noise and road vibrations	YES	NO
Permanently attaches; Cannot be stolen	YES	NO
Will not Crack, Split, or Warp	YES	NO
Virtually no loss of space; Easily allows camper shells, Fifth wheel plates, Ute bars, and tool boxes	YES	NO
Maintenance free; No waxing, Repainting, or screws to tighten	YES	NO
Textured, Flexible surface reduces load slippage	YES	NO
In the event of an accident, Surface is repairable	YES	NO
Available in any colour	YES	NO

Interested in Other Applications?
Request Our Specialised Brochures:



Your Local Rhino Linings Dealer is:



Call 1300 88 77 80 or NZ 0800 4 RHINO

Visit our website: www.rhinolinings.com.au

Rhino Linings Australasia Pty Ltd Rhino Linings USA, Inc
Rhino Linings of Canada, Inc Rhino Linings Europe

The images depicted in this brochure are shown for guideline purposes only, and are not intended to represent the entirety of techniques or methods used by authorised applicators. Dealerships are independently owned and operated.



SPRAYED-ON UTE LINERS



- AVAILABLE IN MANY COLOURS
- SPRAYS ON UP TO 6MM THICK (OR ANY DESIRED THICKNESS)
- SLIP RESISTANT SURFACE KEEPS LOADS IN PLACE
- PREVENTS RUST & CORROSION
- OUTPERFORMS ALL DROP-IN LINERS

 **Rhino Linings®**
THE SPRAYED-ON UTE LINER

BENEFITS OF RHINO LININGS™

Rhino Linings is the worldwide leader in sprayed-on polyurethane linings for ute trays, trailers, boats, and more.

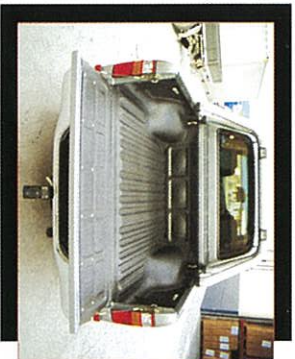
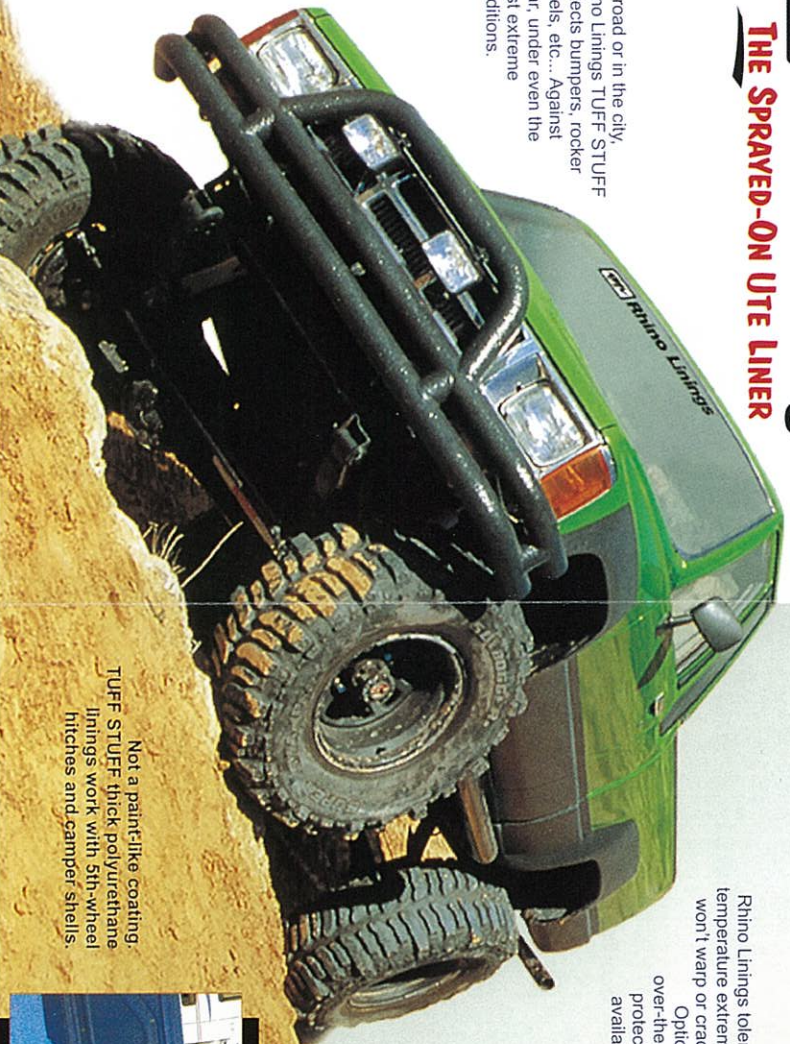
For more than 15 years, Rhino Linings' TUFF STUFF polyurethane has been providing vehicles with a thick layer of protection under the most rugged conditions. The unique flexible and textured surface reduces cargo slippage and will not crack, warp or peel even under temperature extremes.

Sprayed on up to 6mm thick (or any desired thickness), TUFF STUFF polyurethane forms a permanent airtight and watertight seal when sprayed directly onto the tray.



THE SPRAYED-ON UTE LINER

Off-road or in the city, Rhino Linings TUFF STUFF protects bumpers, rocker panels, etc... Against wear, under even the most extreme conditions.



Rhino Linings Polyurethane provides a permanent protective surface for utes, trailers, vans, jeeps, boats and virtually any high wear area.

Sprayed-on TUFF STUFF polyurethane bonds directly to the ute tray to form permanent, watertight / airtight protection against rust and corrosion. Water can't seep under the lining.

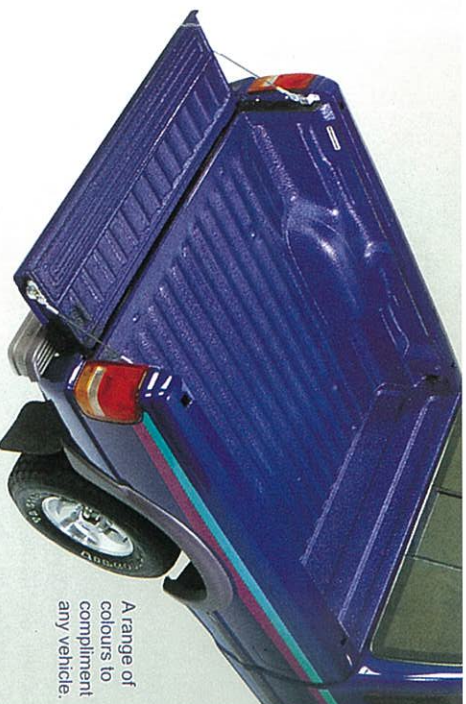


Rhino Linings tolerate temperature extremes, won't warp or crack...

Optional over-the-rail protection available.

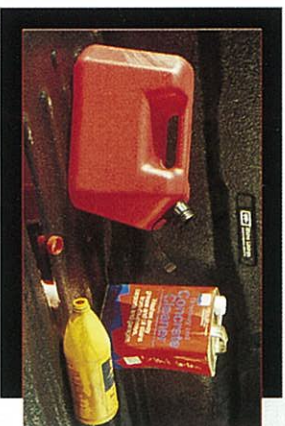


Not a paint-like coating, TUFF STUFF thick polyurethane linings work with 5th-wheel hitches and camper shells.



A range of colours to compliment any vehicle.

Environmentally-friendly and solvent-free Rhino resists petroleum products, fertilizers and most chemicals.



Rhino's TUFF STUFF polyurethane provides a thick layer of resilient protection, even under rugged conditions. The unique flexible, textured surface really reduces cargo slippage.



TUFF STUFF® POLYURETHANE TECHNICAL SPECIFICATIONS

PROPERTY	ASTM METHOD	RESULTS
Hardness	D-2240	85+5 shore A
Tensile Strength	D-412	1700-1900 psi
Elongation	D-412	325-375%
Tear Resistance	D-624	140-150 pli
Water Absorption	D-570	<1.5%
General Chemical Resistance*	Excellent	

Temperature Extremes - maintains most characteristics even in extreme weather conditions. Adheres effectively to steel, aluminum, fiberglass, wood, concrete and most substrates. Rhino Linings' proprietary chemical formula and spray equipment yield a protective surface unlike any available on the market today. See your dealer for details.